

## APPLICATIONS

- Agitation and mixing of liquids containing solid suspensions.
- Cataphoresis plants.
- Stainless Steel units ideal for steam heating of liquid in tanks where uniform heat distribution over a large area is required.

## FEATURES

- High efficiency.
- Wide range of flow capacities.
- Outstanding resistance to erosion/corrosion.
- Tapered inlet reduces wear and resists clogging.
- High velocity jet stream for maximum agitation/mixing.
- Typical turnover ratio of 3:1.

## SPRAY CHARACTERISTICS

- Produces a high velocity straight jet.
- Induces the surrounding liquid into the jet stream.

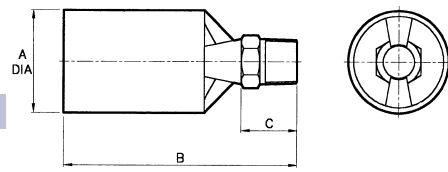
## CONSTRUCTION AND MATERIALS

- One piece design with no internal components.
- Available with 3/8", 1/2" and 3/4" Male BSPT thread.
- Available in 316 Stainless Steel or Glass filled Polypropylene (Polyglass).

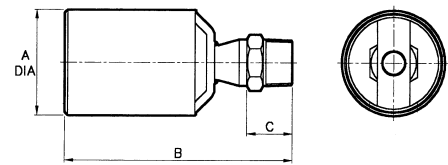
## ORDER EXAMPLE

1/2" BB 100 Stainless Steel.

3/4" BB 250 Polyglass.



MOULDED EDUCTOR



METAL EDUCTOR

### DIMENSIONS AND WEIGHTS

THREAD Size	POLYGLASS				316 STAINLESS STEEL			
	A	B	C	Weight (g)	A	B	C	Weight (g)
3/8"	60,3	140	33,3	79	48,3	124	25	525
1/2"	60,3	140	33,3	85	48,3	127	25	540
3/4"	60,3	140	33,3	86	60,3	137	30	580

Maximum Recommended Pressure: 10 Bar.G.(Polyglass), 35 Bar.G.(Stainless Steel). Maximum Recommended Temperature: 75 °C (Polyglass), 500 °C (Stainless Steel).

## CAPACITY CHART

NOZZLE NUMBER	APPROX. ORIFICE SIZE (mm)	BSPT THREAD SIZE			FLOW RATE IN LITRES/MIN AT Bar.G.									Turnover Ratio 1,5-4,0 Bar.G.
		3/8	1/2	3/4	,7	1,0	1,5	2,0	3,0	4,0	5,0	7,0	8,0	
BB 50	4,4				9,61	11,61	14,2	16,4	20,00	23,1	25,8	30,19	32,2	3:1
BB 75	5,4				14,42	17,42	21,3	24,6	30,00	34,8	38,90	45,3	48,3	3:1
BB 100	6,4				19,1	22,8	27,94	32,24	40,00	45,6	51,0	60,38	64,4	3:1
BB 125	7,1				24,0	29,0	35,5	40,25	50,00	58,0	63,75	75,48	80,5	3:1
BB 150	7,8				28,8	34,4	41,67	48,6	60,00	68,8	76,5	90,12	96,4	3:1
BB 175	8,4				33,4	39,90	48,9	56,48	69,00	79,8	89,25	105,57	110,95	3:1
BB 200	8,8				38,0	45,5	55,70	64,3	78,80	91,0	102	120,31	128,6	3:1
BB 250	9,8				47,6	57,0	69,6	80,4	98,75	114,0	128	150	160,8	3:1
BB 300	11,0				57,2	68,3	83,33	96,9	118,30	136,6	153	180,7	197,8	3:1
BB 350	11,9				66,5	79,63	97,50	112,53	138,00	159,28	178,0	210,54	225,0	3:1
BB 400	12,7				76,0	90,6	111,96	129	157,00	181,2	202,5	241,1	258	3:1

LARGER SIZES ARE AVAILABLE - CONTACT OUR CUSTOMER SERVICES DEPARTMENT

## TANK HEATING CHART

STEAM PRESSURE Bar.G.	TEMPERATURE RISE	TIME IN MINUTES TO HEAT 300 LITRES OF WATER AT VARIOUS STEAM PRESSURES							
		0,35	0,7	1	2	3	4	5	6
5°C	5°C	11	7	6	4	3	2	2	2
	10°C	22	13	11	7	5	4	4	3
	20°C	43	26	22	13	10	8	6	6
	40°C	86	52	43	26	19	15	12	10
	60°C	130	78	64	58	29	23	19	15
	80°C	173	103	86	51	38	30	25	20
100°C	216	130	107	64	48	38	31	25	

This chart is based on using a single 1/2" BB 100 Stainless Steel nozzle with a 6,4mm orifice.

SPECIAL PURPOSE

TYPE BB

Contact our Helpline for any special requirements:  
Tel: +44 (0) 151 424 6821  
Fax: +44 (0) 151 495 1043  
e-mail:sales@delavan.co.uk  
Web:www.delavan.co.uk